



MIDGET CLUB SEAT BELT MOUNTING INSTALLATION



This fitting kit is intended to be used in conjunction with Club Inertia Reel Seat Belts and is appropriate for all years of MG Midgets. Proper location of the belts should ensure smooth operation of the inertia reel mechanisms. (The belts will not operate correctly if mounted at an angle). Note it is of paramount importance that the wheel arches for which the belts are to be secured are structurally sound prior to mounting. If in any doubt, please contact a MG specialist for advice.

Kit Contents

- 1 X RH Mounting
- 1 X LH Mounting
- 2 x 7/16 Bolts 2" (Option B)
- 4 x Star Washers
- 2 x 7/16 Nyloc Nuts (Option B)
- 2 x Distance Tube Spacers (Option B)
- 2 x Square Re-Enforcement/Anchor plates (Option B)
- 2 x Split Washers
- 2 x 7/16 Studs Short (Option A)

Fitting Instructions:

Belt mounting brackets are handed. To identify correctly, the bracket should be placed against the wheel arch as shown below (Fig 1). Correct fitment results in a bracket angled towards the front of the car, with the top plane mounted in a horizontal position.



Fig 1 identifying the brackets (RH shown)

Fitting Option A

Some Midget models will already have factory installed rear seat belt mountings on the side of the wheel arches (indicated by a raised threaded boss welded to the cockpit side of the wheel arch see Fig 2),



Fig 2 Pre-Installed Rear Seat Belt Mountings

In these instances the additional spacers, reinforcement plates and split washers supplied in the kit should not be used. Simply locate the seat belt bracket by placing the short 7/16" bolt, with a spring washer through bracket and place a star washer between bracket and boss. Use a socket to tighten (to approximately 30-35 ft lbs), ensuring that the bracket remains in a horizontal position once secured (See Fig 3). On completion refer to the separate seat belt mounting instructions to complete the installation.



Fig 3 Seat Belt Bracket (RH) located.

Fitting Option B

On models with either factory fitted seat belt mountings located on the top of the wheel arch or without preinstalled mountings altogether, it will be necessary to drill new mounting holes through the side of the wheel arches.

1. Remove the wheel arch carpets and set to one side
2. Identify the correct bracket for each side of the car as per Fig 1.
3. Affix masking tape to the cockpit side of the wheel arch (this will be used for marking purposes) see Fig 4



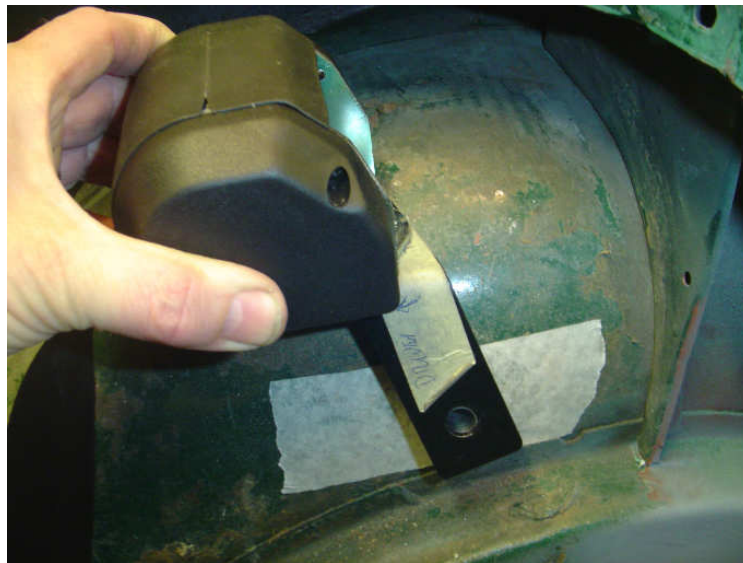
Fig 4 Masking off the wheel arch for marking.

4. Take a felt tip pen that will pass through the spacer and bracket as shown in Fig 5



Fig 5 Marking bracket position

5. Locate the bracket and spacer against the wheel arch and once satisfied with the location, mark the position for drilling. (Tip you can pre install the inertia mechanism to help achieve a satisfactory mounting of the bracket) See Fig 6



See Fig 6 Marking the bracket positions

6. Jack up the rear of the car securely and remove the relevant road wheel.
7. Carefully drill a $\frac{1}{2}$ " hole through the wheel arch as predefined.
8. Locate the seat belt bracket as follows 7/16" bolt, with spring washer, then bracket, star washer, spacer tube and second star washer (see Fig 7)



Fig 7 Bracket pre- assembly

9. Fit the bracket assembly by passing the bolt through the inner wheel arch (cockpit side). From the outside of the car place an anchor plate over the bolt followed by a Nyloc nut. (see Fig8) Tighten the assembly whilst ensuring that the upper plane of the bracket remains in a horizontal position, (torque to 30-35 ft lbs).

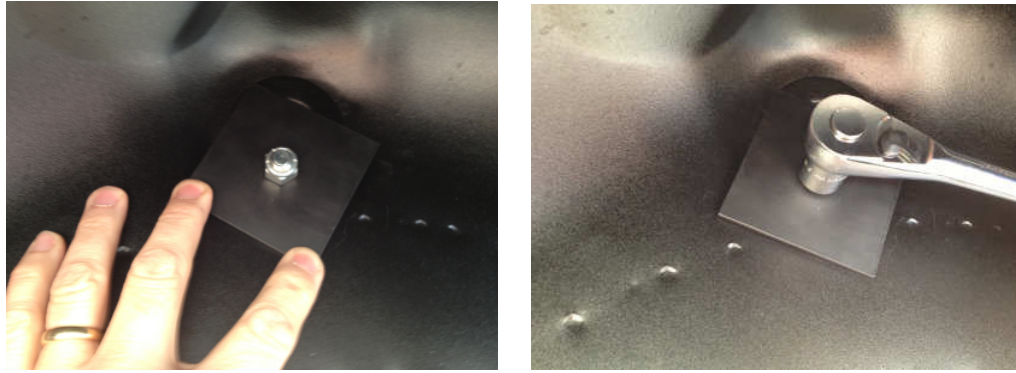


Fig 8 Anchor plate attachment

10. Repeat this procedure for either side of the vehicle, replacing the road wheels and carpets on completion.

To ensure correct operation the belts should be mounted on a horizontal plane (Fig 9). On completion refer to the separate seat belt mounting instructions to complete the installation.



Fig9 Final Installation NB Inertia Mechanism mounted horizontally

NOTE: We advise that you periodically check that the seat belt bracket fixings remain secure.

If you require further installation advice please contact sales@mgocspares.co.uk

MGOC Spares, Octagon House, Cambridge. CB24 4QZ

www.mgocspares.co.uk T 01954 230928



MIDGET CLUB SEAT BELT MOUNTING INSTALLATION



This fitting kit is intended to be used in conjunction with Club Inertia Reel Seat Belts and is appropriate for all years of MG Midgets. Proper location of the belts should ensure smooth operation of the inertia reel mechanisms. (The belts will not operate correctly if mounted at an angle). Note it is of paramount importance that the wheel arches for which the belts are to be secured are structurally sound prior to mounting. If in any doubt, please contact a MG specialist for advice.

Kit Contents

- 1 X RH Mounting
- 1 X LH Mounting
- 2 x 7/16 Bolts 2" (Option B)
- 4 x Star Washers
- 2 x 7/16 Nyloc Nuts (Option B)
- 2 x Distance Tube Spacers (Option B)
- 2 x Square Re-Enforcement/Anchor plates (Option B)
- 2 x Split Washers
- 2 x 7/16 Studs Short (Option A)

Fitting Instructions:

Belt mounting brackets are handed. To identify correctly, the bracket should be placed against the wheel arch as shown below (Fig 1). Correct fitment results in a bracket angled towards the front of the car, with the top plane mounted in a horizontal position.



Fig 1 identifying the brackets (RH shown)

Fitting Option A

Some Midget models will already have factory installed rear seat belt mountings on the side of the wheel arches (indicated by a raised threaded boss welded to the cockpit side of the wheel arch see Fig 2),



Fig 2 Pre-Installed Rear Seat Belt Mountings

In these instances the additional spacers, reinforcement plates and split washers supplied in the kit should not be used. Simply locate the seat belt bracket by placing the short 7/16" bolt, with a spring washer through bracket and place a star washer between bracket and boss. Use a socket to tighten (to approximately 30-35 ft lbs), ensuring that the bracket remains in a horizontal position once secured (See Fig 3). On completion refer to the separate seat belt mounting instructions to complete the installation.



Fig 3 Seat Belt Bracket (RH) located.

Fitting Option B

On models with either factory fitted seat belt mountings located on the top of the wheel arch or without preinstalled mountings altogether, it will be necessary to drill new mounting holes through the side of the wheel arches.

1. Remove the wheel arch carpets and set to one side
2. Identify the correct bracket for each side of the car as per Fig 1.
3. Affix masking tape to the cockpit side of the wheel arch (this will be used for marking purposes) see Fig 4



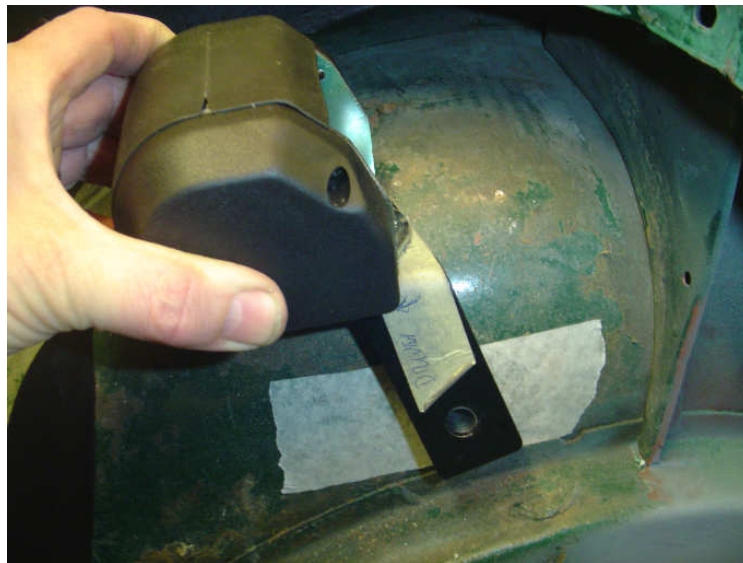
Fig 4 Masking off the wheel arch for marking.

4. Take a felt tip pen that will pass through the spacer and bracket as shown in Fig 5



Fig 5 Marking bracket position

5. Locate the bracket and spacer against the wheel arch and once satisfied with the location, mark the position for drilling. (Tip you can pre install the inertia mechanism to help achieve a satisfactory mounting of the bracket) See Fig 6



See Fig 6 Marking the bracket positions

6. Jack up the rear of the car securely and remove the relevant road wheel.
7. Carefully drill a $\frac{1}{2}$ " hole through the wheel arch as predefined.
8. Locate the seat belt bracket as follows 7/16" bolt, with spring washer, then bracket, star washer, spacer tube and second star washer (see Fig 7)



Fig 7 Bracket pre- assembly

9. Fit the bracket assembly by passing the bolt through the inner wheel arch (cockpit side). From the outside of the car place an anchor plate over the bolt followed by a Nyloc nut. (see Fig8) Tighten the assembly whilst ensuring that the upper plane of the bracket remains in a horizontal position, (torque to 30-35 ft lbs).

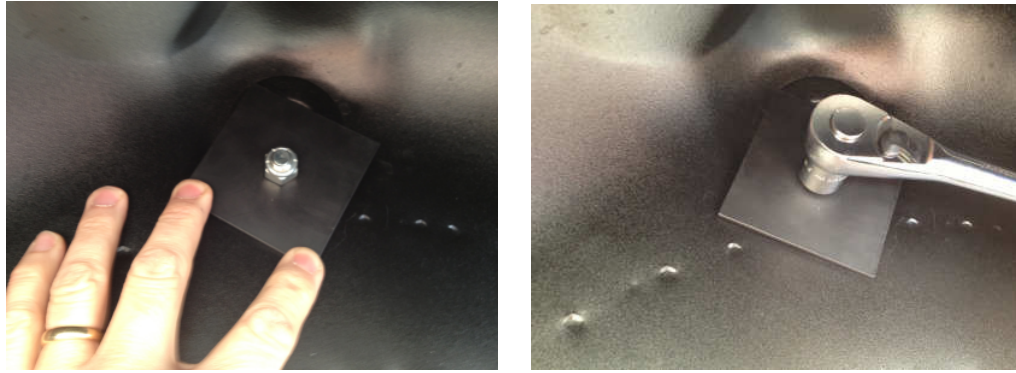


Fig 8 Anchor plate attachment

10. Repeat this procedure for either side of the vehicle, replacing the road wheels and carpets on completion.

To ensure correct operation the belts should be mounted on a horizontal plane (Fig 9). On completion refer to the separate seat belt mounting instructions to complete the installation.



Fig9 Final Installation NB Inertia Mechanism mounted horizontally

NOTE: We advise that you periodically check that the seat belt bracket fixings remain secure.

If you require further installation advice please contact sales@mgocspares.co.uk

MGOC Spares, Octagon House, Cambridge. CB24 4QZ

www.mgocspares.co.uk T 01954 230928